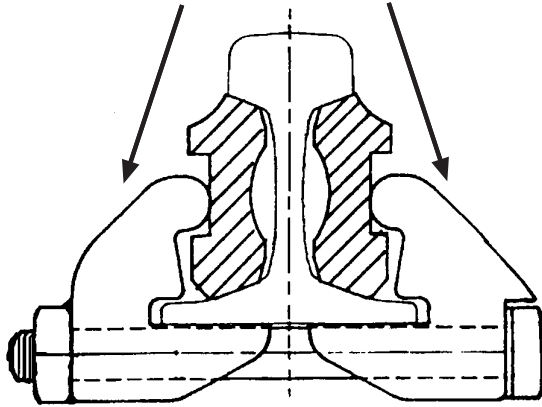


Each Clamp has a
Unique Individual
Number



Please Note each clamp consists of 2 halves, Uniquely and individually numbered.

- 1 Bolt (both Flat bottom & Bullhead clamps share the same nut & bolt assembly)
- 1 pair Nordlock washer
- 1 square Nyloc nut

If at installation or inspection the bolt is bent or deflected whereby it cannot be freely removed from the clamp and if there is any apparent damage to the locking nut and washer assembly then they must be replaced before the clamp is used.



Lesmac (Fasteners) Limited

73 Dykehead Street, Queenslie Industrial Estate, Glasgow G33 4AQ

Tel: 0141 774 0004 Fax: 0141 774 2229

e-mail: sales@lesmac.co.uk website: www.lesmac.co.uk



Lesmac (Fasteners) Limited

73 Dykehead Street, Queenslie Industrial Estate, Glasgow G33 4AQ

Tel: 0141 774 0004 Fax: 0141 774 2229

e-mail: sales@lesmac.co.uk website: www.lesmac.co.uk

**APPROVED FOR USE ON
LONDON UNDERGROUND**

Flat bottom Clamp LU-PR22 } www.lu-apr.co.uk
Bull head clamp LU-PR359 }

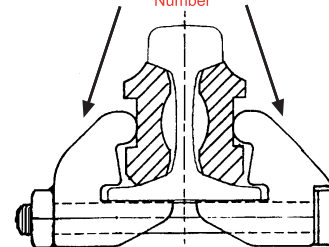
Guide to fitting

Temporary Rail Joint (TRJ) Clamps

These instructions are in accordance with conditions laid down by London Underground

**Important: TRJ Clamps must be correctly fitted,
one clamp on either side of the joint.**

Each Clamp has a
Unique Individual
Number



Before fitting the TRJ Clamps:

- There must be no voids under the four sleepers each side of the joint. The four sleepers must be of the same type either side of each joint. Ballast round the sleepers must be well packed (sub surface and open sections) and equally consolidated. All fixings must be secure and in good condition.

Installing the TRJ Clamps:

- Offer the fishplates up to the joint, one on each side of the rail, with the joint midway along the fishplates. Check that they both fit tightly and squarely with no gaps or misalignments. If new to old rail / BH to FB, ensure that the correct alignment of the joint can be achieved to allow for headwear / profile differences.
- Remove the Nyloc nuts and Nordlock washers from two TRJ Clamps and split the Clamps. Install each Clamp midway between the end of the fishplate and the joint.
- Put the Nordlock washer and Nyloc nut back on each TRJ Clamp bolt. Check that each Clamp is correctly located tight onto the bottom of the rail with the Clamp head tight against the fishplate as per the cross-sectional picture overleaf. Tighten to recommended torque and recheck for squareness and alignment.
- If used on concrete track then sufficient clearance (min 25mm) must be retained beneath the clamp(s) and all standards and conditions for use relative to joint installation / inspection / maintenance shall apply for the period of installation until removed.

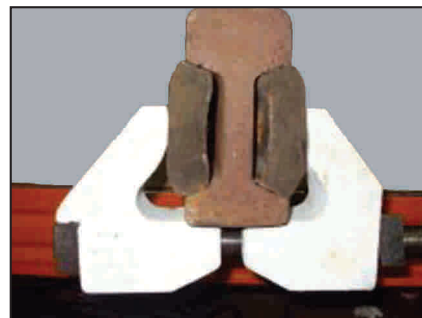
After Installation:

- Speed restriction and inspection frequency shall be applied as / when required by **L.U.L**
- All TRJ's that are to remain in traffic, must be bonded where required by qualified signal staff.



Flat Bottom Clamp

for Ballasted Track 2 per joint
Req. Torque setting 300 ft lbs / 400 Nm
Stores No. 610/9760A
LU-PR22



Bull Head Clamp

for Ballasted Track 2 per joint
Req. Torque setting 220-240 ft lbs / 300-325 Nm
Deep Socket Required
Stores No. 610/9759A
LU-PR359