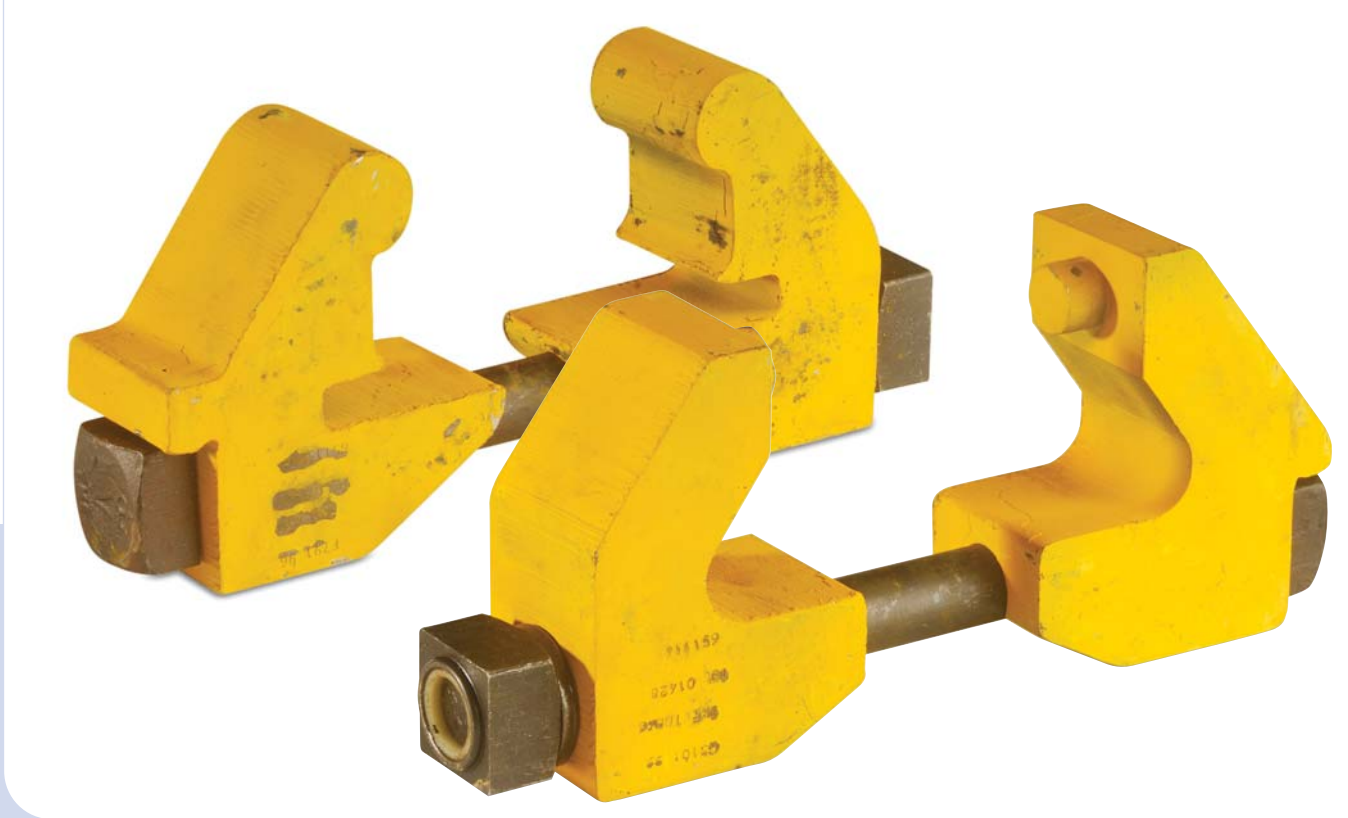


# TEMPORARY C CLAMPS



Designed for clamping rail joints, broken and defective rails in accordance with the requirements of :  
**Network Rail Line Specifications RT/CE/S/102 & RT/CE/S/103.**

For use with flat bottom rail profiles BR109, BS110A, BS113A or 60 EI (UIC60)

TME-TRJ-B Temporary Rail Joint Clamp.

Certificates of Acceptance :

PA05/014 for 'B' Version 1131b/UIC60 Clamps F791/96

PA05/575 for Bullhead Clamps RS101/00 (57/054325)

Maximum Torque: 350ft/lb (460Nm) - DO NOT OVERTIGHTEN

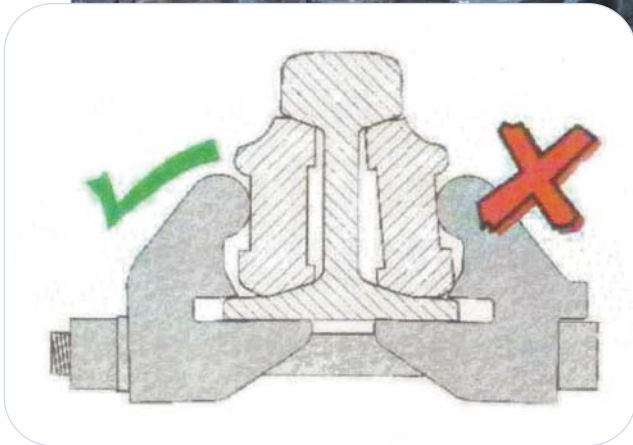
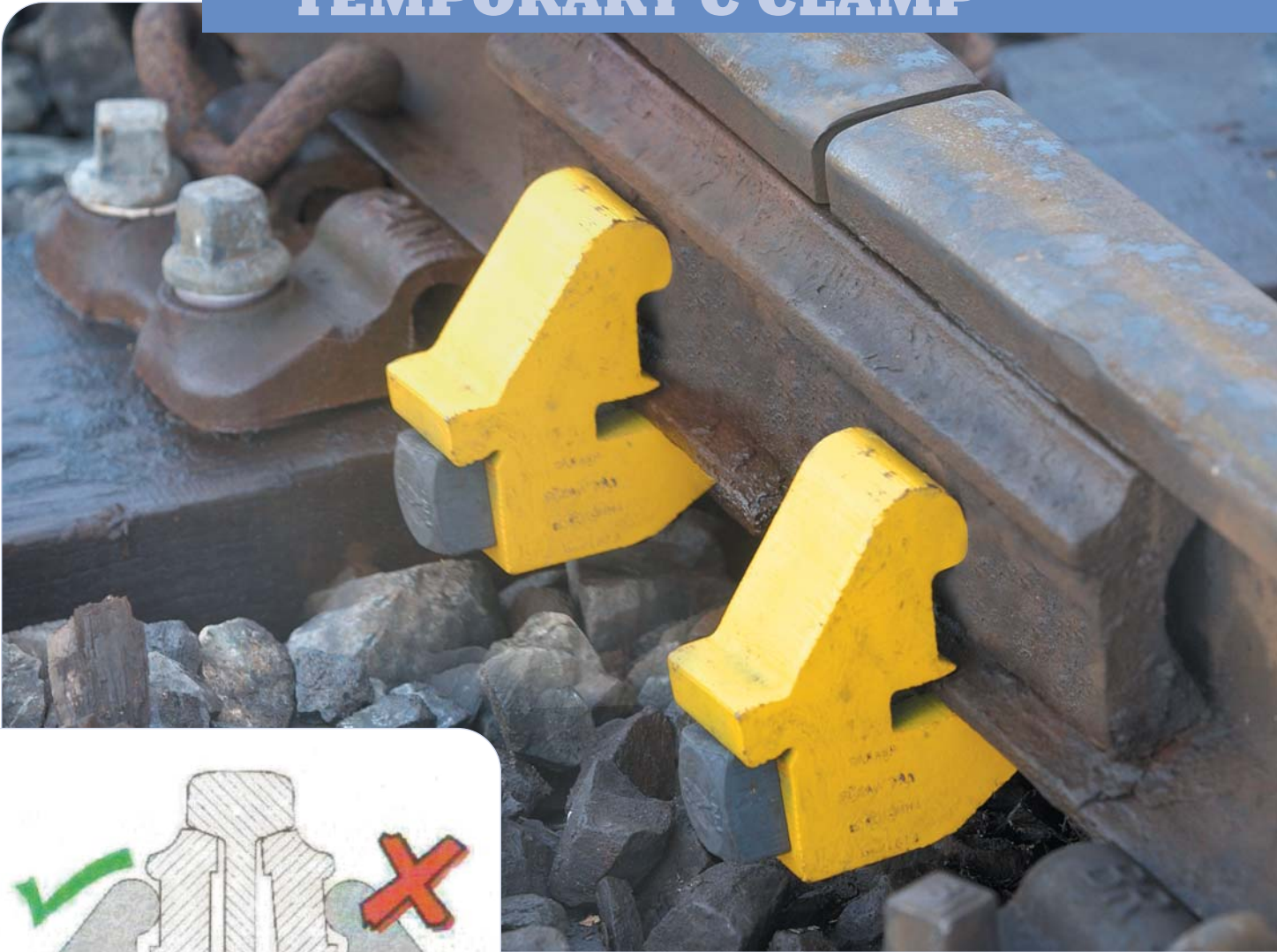
(80lb & Underground Clamps also available)



Lesmac Fasteners Ltd  
 73 Dykehead Street  
 Glasgow G33 4AQ  
 tel : 0141 774 0004  
 fax : 0141 774 2229  
 e : sales@lesmac.co.uk

www.lesmac.co.uk

## TEMPORARY C CLAMP



### **IMPORTANT!**

If replacement bolts are necessary, use only bolt 57/150028



www.lesmac.co.uk